

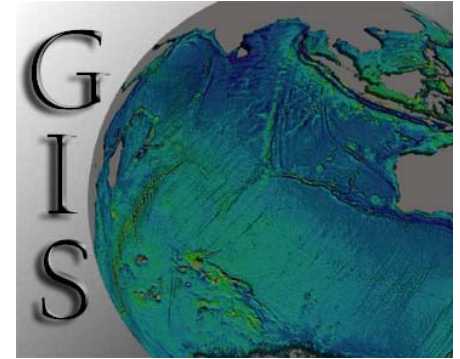
As of October 31, 2006, the GIS Club has been officially recognized as a student organization here at UWM. Membership is free and open to all full or part-time UWM students.

The GIS Club was founded to assist with the *professional development* of all UWM students interested in pursuing GIS as a career.

The GIS Club seeks to offer training to those unfamiliar with the technology, create networking opportunities for job-seekers, and provide assistance to students interested in UWM's GIS certificate program. We hope to stimulate a wider interest in the technology by encouraging students from a variety of different disciplines and backgrounds to join the club.

GIS Club

(at UWM)



Campus Address:

GIS Club
Union Box 287
350 Union Building
University of Wisconsin-Milwaukee
Milwaukee, WI 53201-0413

Founding members:

Brian Thayer bpthayer@uwm.edu

Rama Mohapatra rama@uwm.edu

Kyle Noll kylennoll@uwm.edu

Greg Rybarczyk gar2@uwm.edu

(Please don't hesitate to contact any of us for further information on how to get involved with the club)

THE INFINITE POSSIBILITIES OF GEOGRAPHIC INFORMATION SYSTEMS

The future of Geographic Information Systems is truly exciting. While traditional uses of the technology continue to flourish in the disciplines of geography, urban planning and many of the natural sciences, a much wider use of the technology is already taking off throughout science, government, business, and industry. Such applications include real estate, public health, crime mapping, national defense, sustainable development, natural resources, transportation and logistics. The means of accessing the technology itself is even changing as there has been a growing trend of GIS applications moving online.

The University of Wisconsin-Milwaukee has a rich history in applied geographic information system technology. There is a wealth of opportunity here in which to take advantage of such as state of the art facilities installed with the latest software and faculty members from numerous disciplinary backgrounds with expertise and experience in applying GIS in new and exciting ways.

If you would like to discover more about geographic information systems, the next logical step would be to join the GIS Club here at UWM.

Tentatively, we plan to convene on a monthly basis.

The time and locations of all future meetings will be announced at least 2 weeks in advance.

The next steps...

As membership increases, an email reflector will be created to keep people up to date concerning future club events. We have also been allocated university web space and hope to get a website up and running soon. Any member with internet development experience could use this as an excellent opportunity to showcase their skills. The GIS Club will also explore any funding possibilities, however our immediate goal is simply to create a diverse membership base and share our ideas with one another. We hope you join and spread the word!